

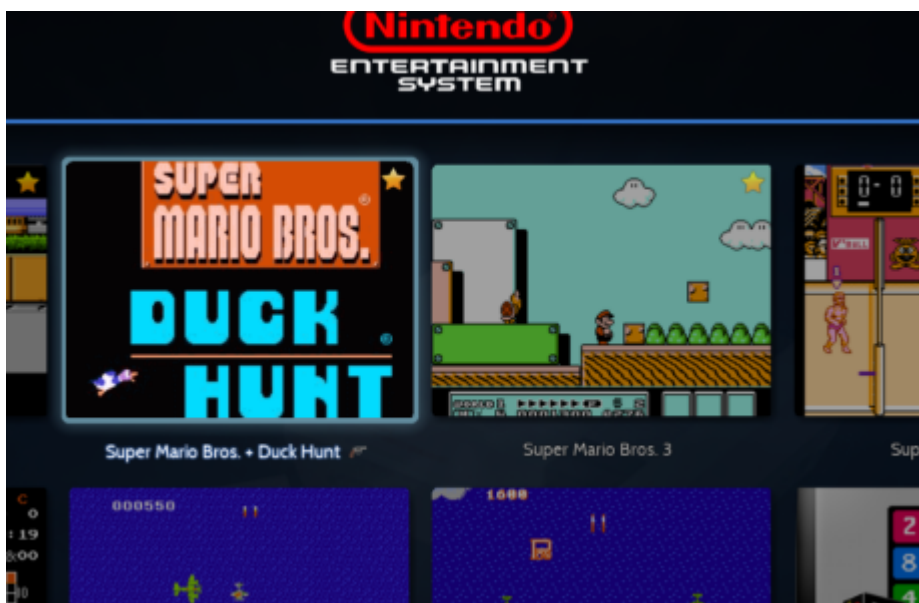
# Light gun guide

If you've ever been in a video game arcade before it's almost guaranteed you've seen a specially large cabinet featuring a fake "light" gun which could be used to aim at a screen displaying the game, one example being 🎮 [Terminator 2: Judgment Day](#). Thanks to the efforts of various developers and hardware manufacturers, it is now possible to bring that experience to the home using Batocera! This also includes the various home ports of such light gun games such as the infamous 🎮 [Duck Hunt](#).

Once the light guns are connected, a crosshair will appear on the screen:



The game list will also indicate which games are light gun compatible with a small theme-specific icon next to the name (this can be optionally disabled):





## Light gun comparison





So, first and foremost, a light gun is needed—possibly multiple if you intend to play multiplayer (be sure to have enough physical space for both collision avoidance and tracking). Various light guns have entered the market, each offering its own advantages and disadvantages. Unless specified otherwise, the light gun is compatible with all displays. Click on the light gun to go to its section.

The precision rating is based on five tests:

1. **Calibration:** Does it trigger correctly and work as intended?
2. **Corner:** Does it aim properly at the edges of the screen?
3. **Position:** Is it accurate if you physically move from your initial position?
4. **Rotation:** Is it accurate if you rotate the gun while aiming at the same target?
5. **Latency:** Does it trigger the offscreen reload if you quickly move the aim outside the display?



Want your light gun added to the list? Join our **Discord** and ask for assistance in **#lightguns** channel.

Light gun	Tracking method	Precision	Minimum distance required (x * display size)	Connectivity	Estimated price (\$US)	Notes
<a href="#">AE Lightgun</a> 	Infrared	★★★★☆	3x to 3.5x	USB cable (290 cm)	\$125	Requires at least nine feet/three metres of space to use. Has calibration issues, requiring multiple attempts before it will apply.
<a href="#">Ultimarc Aimtrak</a> 	Infrared 	★★★★☆	2x to 2.5x	USB cable (370 cm)	\$95 (w/o recoil)/\$120 (w/ recoil)	Has calibration issues, requiring multiple attempts before it will apply.
<a href="#">Blamcon Light Gun</a> 	Infrared	?	1x (with fisheye lens) to 2x (without lens)	USB cable	\$60 (DIY)/Up to 600\$ (pre-assembled with custom preferences)	Larger displays require more physical distance (or wide/fish lens). Full support starting v42.

Light gun	Tracking method	Precision	Minimum distance required (x* display size)	Connectivity	Estimated price (\$US)	Notes
<p>Mayflash Dolphinbar with Wiimote gun</p> 	<p>Infrared</p> 	★☆☆☆☆	1.5x	Connect Dolphinbar to machine via USB cable, then Wiimotes to Dolphinbar via Bluetooth	\$10-20 second-hand Wiimote + \$35 Dolphinbar	Works universally across machines and Wiimotes, but tends to jitter. <b>No calibration possible, crosshair is mandatory.</b> This is the only option on v34 and lower. Also, the Wiimote itself is wireless (most other light guns are wired).
<p>Direct Wiimote gun with IR bar</p> 	<p>Infrared</p> 	★☆☆☆☆	2.5x	Bluetooth	\$10-20 second-hand Wiimote + \$3-\$10 IR bar	Need to have a powered IR sensor bar, but is far more accurate than using the Dolphinbar. Also, the Wiimote itself is wireless (most other light guns are wired). It is possible to convert the Mayflash Dolphinbar into a regular IR sensor bar with a firmware update, to use it as if though it were just a regular IR bar (this disables the Dolphinbar's Bluetooth connection, the Wiimote must be connected to a different device).
<p>Fusion Lightgun</p> 	<p>Infrared</p>	★☆☆☆☆	2.5x	USB cable	\$80 (DIY)/\$200 (pre-assembled)	Larger displays require more physical distance (or wide/fish lens). Using SAMCO technology.
<p>GUN4IR</p> 	<p>Infrared</p> 	★★★★★	1.2x (with fisheye lens) to 2x (without lens)	USB cable	\$80 (DIY)/\$200 (pre-assembled)	Larger displays require more physical distance (or wide/fish lens). Full support starting v36.
<p>Namco GunCon2/G-Con2</p> 	<p>Cathode ray timing</p> 	★★★★★	0.2x to 1x	Composite/component cable	\$25-\$50 second-hand, low availability	Limited to <b>analogue displays</b> which supports composite/component input. <b>This cannot be used on a modern digital display.</b>
<p>GunCon3</p> 	<p>Infrared</p>	★☆☆☆☆	1.5x to 2x	USB cable	?	Larger displays require more physical distance (or wide/fish lens). Full support starting v38.

Light gun	Tracking method	Precision	Minimum distance required (x * display size)	Connectivity	Estimated price (\$US)	Notes
<a href="#">OneHit (AimTrak clone)</a> 	Infrared	?	?	USB cable	?	Full support starting v42.
<a href="#">OpenFIRE light gun</a> 	Infrared	?	?	USB cable	?	Full support starting v42.
<a href="#">Retro Shooter</a> 	Infrared	★★☆☆☆ (2 IR) ★★☆☆☆ (4 IR)	2.5x to 3x (2 IR) 2x (4 IR)	USB cable	185\$ including a pedal and hub for recoil	Recoil can optionally be disabled or put to single shot. Two IR requires massive distance or fish lens. Full support for RS1 & RS2 starting v39; full support for RS3 Reapers starting v42.
<a href="#">SAMCO light gun</a> 		★★★★☆	1.5x	USB cable	?	?
<a href="#">Sinden Lightgun</a> 	White border on display	★★★★☆	1.5x	USB cable (480 cm)	\$100 (w/o recoil)/\$160 (w/ recoil)	Recoil can optionally be disabled. Requires shrinking the game screen to display the white borders. Has limitations on how many guns can be used per USB hub.
<a href="#">XGunner Light gun</a> 	Infrared	★★★★☆	2x	Wireless 2.4GHz with a USB dongle	\$125	Full support starting v42.

## Global calibration

When a light gun is connected, a light gun symbol will appear in place of the controller activity icons (if that is enabled and the theme supports it). In addition, a new menu item might appear in the **CONTROLLERS & BLUETOOTH SETTINGS** menu specific to the light guns that are currently connected. This can be used to adjust settings specific to that light gun.

One global calibration is required and is saved within the light gun itself. All global calibration can be performed at any time, even during gameplay, however this sort of calibration will **always** be for global calibration (it is not saved per-game, it's only needed to be done once). Refer to the section relevant to your light gun below for instructions.



While being recommended overall, it is not an absolute necessity to have one proper controller pad connected in addition for each light gun connected. However, it gives an easier control in order to [access commands](#) or press buttons unavailable on the light gun itself *in some games*.

Each controller corresponds to each light gun in player order. So for instance, if player 2's light gun is missing a coin button ([START]), then this can be pressed on player 2's controller to activate that light gun's coin button.

## AE Lightgun



The [AE Lightgun](#) comes with its own IR bar which can be mounted on the top of or at the bottom of the display, much like the Wiimote and Ultimarc AimTrak.

### AE Lightgun setup

Connect both the light gun and the IR bar via USB. Then, press the button in front of the main trigger to launch the global calibration process. Shoot the middle, top-right and bottom-left targets as they appear.

## Ultimarc AimTrak



The [Ultimarc Aimtrak](#) comes with its own IR bar which can be mounted on the top of or at the bottom of the display, much like the Wiimote. Requires Batocera **v35** or higher.

### Ultimarc AimTrak setup

Connect both the light gun and the IR bar via USB. Then, hold main trigger for five seconds to launch the global calibration process. Shoot the top-left, top-right and bottom-center targets as they appear.

### Ultimarc AimTrak recoil

If using a recoil model, a separate power supply is required. This is **not** bundled with the light gun. More info can be found on its [store page](#). Scroll to Recoil Power Requirement (Guns with recoil option only) section.

## GUN4IR




### GUN4IR setup

For the time being, any custom and manual settings must be done inside Windows with GUN4IR tool and burned into the light gun.

If you have the calibration button, press it and shoot all targets in turn.

## Namco GunCon 2



The  [Namco GunCon](#) (known as G-Con in Europe) is a PlayStation peripheral first released in 1994, with the GunCon 2 for the PlayStation 2 following it up in 2001. If you have a GunCon 2 and a compatible analogue TV, you may be able to utilise it with Batocera. **This cannot be used on a modern digital display.**

### Namco GunCon 2 setup



The [CRT script](#) already has this setup. Use the GunCon2 calibration tool in the category CRT from ES.

Create a sh file inside the ports folder

```
/userdata/roms/ports/GunCon2_Calibration.sh
```



The calibration script must be marked as executable with the `chmod +x` command:

```
chmod +x /userdata/roms/ports/GunCon2_Calibration.sh
```

### [GunCon2\\_Calibration.sh](#)

```
#!/bin/bash
xrandr --output $(xrandr | grep -o '.* connected' | sed 's/connected//') --gamma 1:1:1 --brightness 2.0
guncon2_calibrate.sh
xrandr --output $(xrandr | grep -o '.* connected' | sed 's/connected//') --gamma 1:1:1 --brightness 1.0
```

- The first line will increase the brightness via xrand
- The second line will launch the calibration script via switchres
- The third line will set the brightness back to default once the script exits.



The [CRT script](#) already has this setup. Use the GunCon2 calibration tool in the category CRT from ES.

## Calibration How To

**You only need to do a first calibration once.**

- Start the calibration by pressing the gun trigger.
- Follow the onscreen instructions and aim at all the 4 circles with the cross in the middle.
- Try to be as exact as possible.
- The result will not be perfect even if you aimed exactly in the middle using the GunCon2's crosshair.
- This is normal..
- Exit the script and save the settings by pressing A or B

## Micro Calibrations in-game

- Button C + D-pad left/right → decrease x-min → apply if your gun is out on left of the screen
- Button C + D-pad up/down → increase x-max → apply if your gun is out on right of the screen

## Namco GunCon 3



The [Namco GunCon 3](#) (known as G-Con 3 in Europe) is the last PlayStation peripheral of the series, released in 2007 in a bundle with Time Crisis 4. Instead of CRT, the light gun uses similar technology to Wiimote, with infrared LEDs placed left and right on top of the display.

Requires Batocera **v38** or higher.

## Namco GunCon 3 setup

[Place the infrared LEDs properly with enough distance between them, on top of your display, front facing the gun. Refer to](#)

official manual

for best setup.

**V39:** to start calibration, press and hold B2 button, then proceed to shoot each target.

**V40+** to start calibration, press and hold C2 button.

## Retro Shooter Lightgun

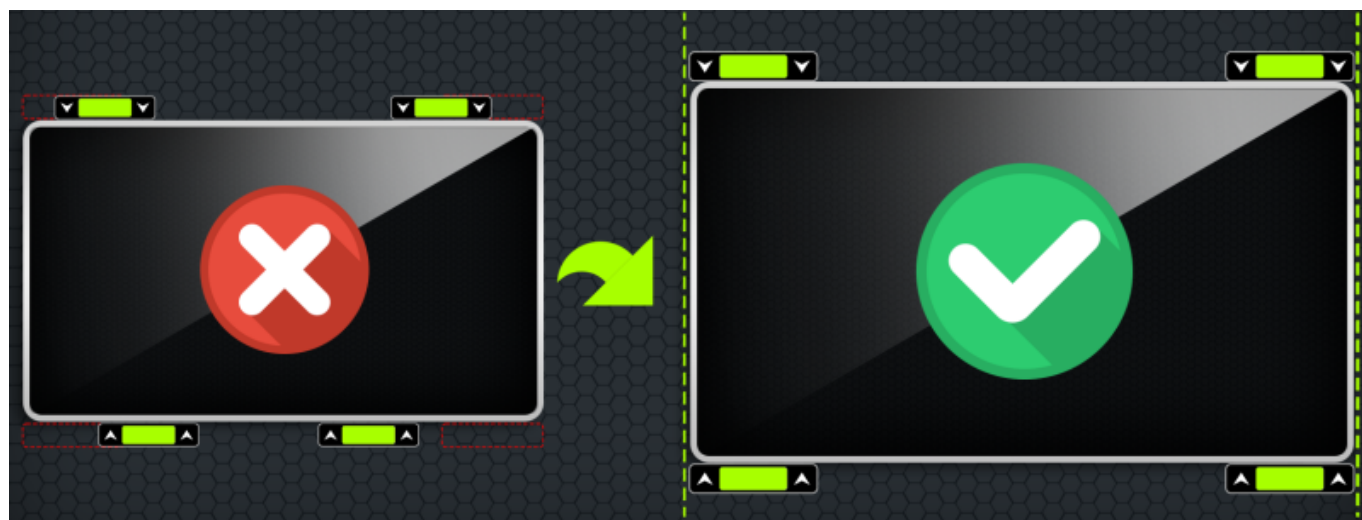


The **Retro Shooter** comes with its own IR leds (two on older models; four since october 2023). They are mounted at top corners (2IR) or all four corners (4IR) of the display, similar to SAMCO and Fusion Lightgun.

First model of Retro shooter requires Batocera **v39** minimum. RS3 Reaper model requires Batocera **v42** minimum.

### Retro Shooter setup

Place IR leds as shown below :



To calibrate the light gun, press and hold 3 seconds the rear left button, then proceed on shooting target. Make sure you are far enough from your display and sunlight is out. If you are with 2IR leds, you need to double that distance.

The light gun will reboot with updated values once calibration is done.

## Retro Shooter recoil

- To switch between single shot or automatic, press and hold stick button 3 seconds to change its mode.
- To turn off the recoil, unplug the recoil cable or press and hold stick button while powering it.

## Sinden Lightgun



The [Sinden Lightgun](#) is a light gun which uses a regular camera looking at a white border to perform its tracking. Batocera will automatically enable a white border when the Sinden Lightgun is connected, as well as shrinking the content of the games to accomodate for this. Requires Batocera **v35** or higher.



A hardware bug prevents the use of multiple Sinden Lightguns on a single USB hub on some boards. Computers will typically use a single hub for groups of the same ports accessed via the IO panel. The best way around this is to plug one light gun into the front facing ports, and another into the IO panel. If your machine has a mixture of USB 2.0 (black tongue) and USB 3.0 (blue tongue) ports, they will usually have separate hubs.

Starting v40 with firmware 1.09, this issue should be fixed.

## Sinden Lightgun setup

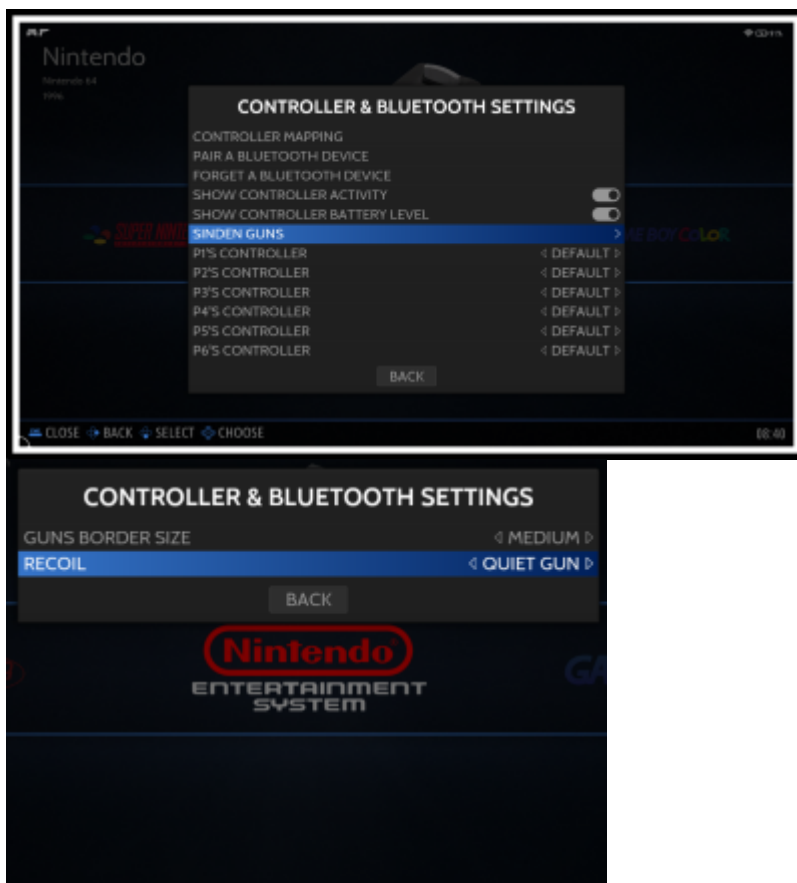
Connect the USB cable to the machine. Then hold left on its D-pad for five seconds. Shoot the center of the screen. Calibration is complete.

Make sure you **disabled any overscan/zoom settings**, otherwise your white border will be hidden!

## Sinden Lightgun settings

Sinden Lightguns offer the following options in **CONTROLLER & BLUETOOTH SETTINGS** → **SINDEN GUN SETTINGS**

- **BORDER SIZE:** Thin, medium or big. By default, the medium one is enabled (the size may differ depending on the emulator).
- **BORDER MODE:** Select when to display the border.
  - **NORMAL:** Always shown in EmulationStation and in game (default)
  - **IN GAME ONLY:** Only shown when playing a light gun game.
  - **HIDDEN:** Disable, useful if using your own bezels with their drawn border.
- **BORDER COLOR:** Change the color of the border either in white (default), red, green or blue.
- **CAMERA CONTRAST:** Adapt the camera contrast to your setup (daytime/bright, default, dim display/evening)
- **CAMERA BRIGHTNESS:** Adapt the camera brightness to your setup (daytime/bright, default, dim display/evening)
- **CAMERA EXPOSURE:** Adjust the camera exposure to your setup (useful for projector/crt)
- **RECOIL:** Adjust the behaviour and strength of the force-feedback when holding down the trigger.
  - **No recoil:** No force-feedback at all.
  - **Gun:** Recoil, delay, then rapid recoil until trigger is released.
  - **Quiet gun:** Same as “Gun”, but less intensity.
  - **Machine gun:** Rapid recoil until the trigger is released.
  - **Quiet machine gun:** Same as “Gun machine”, but less intensity.



## Direct Wiimote gun with IR bar



The Wii was revolutionary for its motion-based controls when it released back in 2006. This technology can now be used to emulate a light gun in Batocera, useful if you happen to have an old Wiimote and sensor bar laying around that is unused (though for convenience, buying a USB-powered sensor bar may be necessary). This is recommended over using the Mayflash Dolphinbar as the direct connection has far superior accuracy. This is a special mode for the Wiimote when connected to Batocera. This will be referred to as the Wiimote gun from now on.

Unlike the direct Wiimote connection method, modes 1 and 2 do not utilize any special Wiimote gun mode in EmulationStation to function, instead the Dolphinbar itself emulates being a mouse and keyboard to the machine. You are unable to calibrate or use more than A and B buttons. However, if you wish to use your Mayflash Dolphinbar as a regular IR sensor bar in addition to your own BT module, a firmware update from [Mayflash](#) is required to unlock a new mode by pressing and holding [MODE] on the Dolphinbar (as shown in this [short tutorial](#)). The LEDs will remain powered on for 4 hours before shutting down.



Most third-party remotes won't work as they don't respect the correct bluetooth connection process, requiring the Mayflash Dolphinbar Bluetooth module.

However, starting **v39**, you can enable the `wiimote3rdparty` service in SYSTEM SETTINGS → SERVICES to use your third-party wiimote.

## Direct Wiimote gun setup

Set up the powered IR bar by taping over one side with solid tape and positioning the remaining LED at the bottom/top center of the display. Counter-intuitively, this setup works best when only one IR LED is visible (otherwise the cursor on-screen may “jump” when aiming at the edges).



Connect the Wiimote directly as a regular Bluetooth device. A notification will appear indicating that the Wiimote has connected in its gun mode, with a little light gun icon appearing (if the theme supports it). Once connected, **press and hold the [Home] button for three seconds**. A target will appear in the center of the screen, aim the Wiimote at it from your neutral shooting position and press [B]. Then a target will appear at the top-left; aim at that and press [B] again.

If the second target cannot be shot at, move further away from the display and repeat the process from the start. It may also help to put the IR bar above the monitor instead of below.



Dolphin can emulate the pairing function of the emulated Wii system, allowing for direct connections to the Wiimote. This is independent of what Wiimote gun settings are used in EmulationStation.

## XGunner

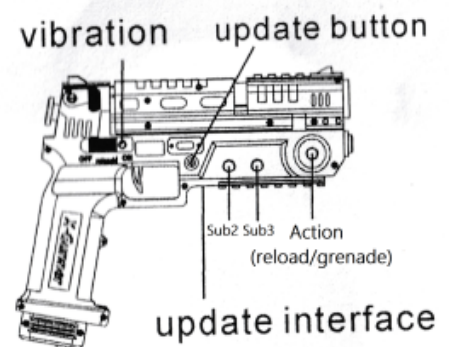
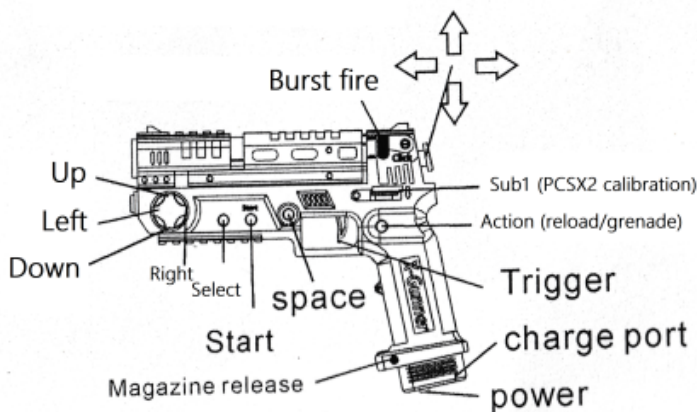


The XGunner light gun comes with its own IR leds. They are mounted on all four corners (4IR) of the display, similar to Retro Shooter light guns.

### XGunner setup

Plug in the wireless USB dongle linked to the light gun number. Put 18650 batteries (3,7V recommended) in battery pack, load it into the light gun's grip and turn it on.

To enter calibration (engineering) mode, press SPACE and START buttons. Shoot once on screen to begin calibration. Use fake analog stick on the back to adjust calibration (left/right for X axis; up/down for Y axis). Shoot once for each axis when you're done.



Press the Start key and the Space key simultaneously to enter the engineering mode.

### XGunner solenoid




There are two modes : burst fire and single/autofire. Locate VIBRATION and BURST FIRE toggles in the image above.

### Emulator support

A table showing which emulators and cores support light guns (must be switched manually for

systems using a default core not compatible with light guns).

System	Emulator	Initial gun support	Crosshair ?	Multi-guns ?	Notes
<a href="#">3do</a>	retroarch/opera	35	✓	✗	Multiplayer unsupported for now
<a href="#">amstradcpc</a>	retroarch/cap32	37 	✓		Supported but not out of the box
<a href="#">arcade</a>	mame	35	✓	✓	
	retroarch/mame	40	✓	✓	
	retroarch/mame2003	35	✓	✓	
	retroarch/mame2010	✗			
	retroarch/fbneo	35	✓	✓	
<a href="#">atari800</a>	mame	✗			
<a href="#">atari2600</a>	retroarch/stella	35	✗	✓	
<a href="#">atari7800</a>	mame	✗			
<a href="#">atomiswave</a>	retroarch/flycast	35	✓	✓	
	flycast	35	✓	✗	Not out of the box, multiplayer unsupported for now
<a href="#">c64</a>	libretro/vice_x64	35	✓		
	vice/x64	35		✓	
<a href="#">hypseus singe</a>	hypseus singe	35	✓	✗	
<a href="#">dreamcast</a>	retroarch/flycast	35	✓	✓	
	redream	35	✓	✗	
	flycast	35	✓	✗	Multiplayer unsupported for now
<a href="#">gx4000</a>	retroarch/cap32	37 	✓		Supported but not out of the box
<a href="#">lindbergh</a>	lindbergh	42	✗	✓	
<a href="#">master system</a>	retroarch/genesisplusgx	35	✓		~ <sup>1)</sup>
<a href="#">megadrive</a>	retroarch/genesisplusgx	35	✓	✗	
<a href="#">model2</a>	model2emu	35	✓	✗	Multiplayer unsupported for now
<a href="#">model3</a>	supermodel	35	✓	37	
<a href="#">naomi</a>	flycast	35	✓	✗	Multiplayer unsupported for now
	retroarch/flycast	35	✓	✓	
<a href="#">namco2x6</a>	Play!	35	✗	✗	Namco 2×6 emulation is very early
<a href="#">nes</a>	retroarch/nestopia	35	✓		
	retroarch/fceumm	35	✓		
	retroarch/mesen	35	✗		
<a href="#">psx</a>	duckstation	40	✓	✗	Multiplayer unsupported for now

System	Emulator	Initial gun support	Crosshair ?	Multi-guns ?	Notes
	retroarch/mednafenpsx	35 	✗	✗	Only works with software renderer
	retroarch/PCSXrearmed	35	40	✓	
	retroarch/swanstation	35	38	✗	
ps2	PCSX2	37	40	✓	
	retroarch/PCSX2	✗			
ps3	RPCS3	36	40	✓	PS Move emulation is very early
saturn	retroarch/beetle-saturn	35	✓	✓	
	retroarch/kronos	✗			
segacd	retroarch/picodrive	✗			
	retroarch/genesisplusgx	35	✓		
snes	retroarch/snes9x_next	✗			
	retroarch/snes9x	35	✓		~ <sup>2)</sup>
	retroarch/mesen-s	35	✗		
	retroarch/bsnes	35	✗		
steam	steam	35		✗	
wii	dolphin	36	✓	✓	
	retroarch/dolphin	✗	✓		Kind of supported but not out of the box
windows(wine)	wine/lutris	Untested		✗	
	wine/proton	35		✗	
xbox	xemu	✗			
zxspectrum	retroarch/fuse	✗			

Games which are light gun compatible will belong to the light gun genre in EmulationStation. Some themes support showing this tag to make it easier to quickly identify which games are light gun games. It is also possible to enable the light gun category as a selectable system.

## Button mapping (WIP)

### Emulators buttons mapping

Each light gun has its own button code when pressed. This code is translated to a global code in Batocera. When triggered, the global code will be translated into the emulator to a specific command. In the future, it will be possible to customize the mapping.

For example: when pressing the physical MINUS button on the Wiimote, it triggers the button event KEY\_PREVIOUS, which is translated to the global code event BTN\_1 in Batocera, which activates the Coins value in Naomi and MAME arcade games.

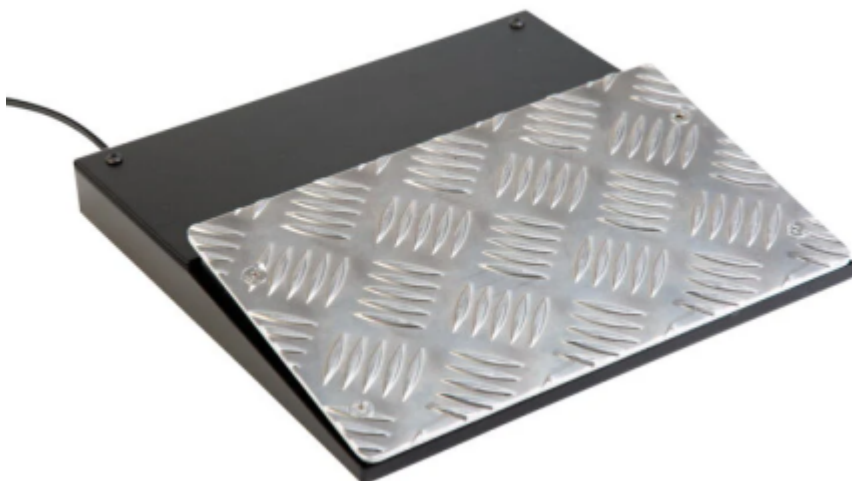
Name	Global code	lr-snes9x	lr-genesisplusgx	lr-beetle-saturn	lr-pcsx_rearmed	lr-fbneo	lr-flycast	PCSX2	RPCS3	MAME	Dolphin/Wii	model2emu	Supermodel
Trigger	BTN_LEFT	FIRE	TRIGGER	TRIGGER	TRIGGER	TRIGGER	TRIGGER	Trigger	T	TRIGGER	B	TRIGGER	TRIGGER
Action	BTN_RIGHT	CURSOR	1	RELOAD	A/SPECIAL	SECONDARY	SECONDARY/B	C	MOVE (~)	SECONDARY	A	RELOAD	RELOAD

Name	Global code	lr-snes9x	lr-genesisplusgx	lr-beetle-saturn	lr-pcsx_rearmed	lr-fbneo	lr-flycast	PCSX2	RPCS3	MAME	Dolphin/Wii	model2emu	Supermodel
Start	<i>BTN_MIDDLE</i>	TURBO	2	START	B/START	START	START	A	START	START	PLUS	COIN	COIN
Select	<i>BTN_1</i>	PAUSE	PAUSE			COIN	COIN	B	CROSS (X)	COIN	MINUS	START	EVENT/START
SUB1	<i>BTN_2</i>							Recalibrate shot	CIRCLE (O)		1		
SUB2	<i>BTN_3</i>							Start			2		
SUB3	<i>BTN_4</i>							Select			HOME		
Up	<i>BTN_5</i>						D-Pad Up	D-Pad Up	TRIANGLE (Δ)		D-Pad/Up		
Down	<i>BTN_6</i>						D-Pad Down	D-Pad Down	SQUARE (□)		D-Pad/Down		
Left	<i>BTN_7</i>						D-Pad Left	D-Pad Left	SELECT		D-Pad/Left		
Right	<i>BTN_8</i>						D-Pad Right	D-Pad Right			D-Pad/Right		

## Default global mapping

Name	Global code	AElightgun	AimTrack	Dolphinbar	Fusion Lightgun	GUN4IR	GunCon2	GunCon3	Retro Shooter	Sinden Lightgun	Wiimote
Trigger	<i>BTN_LEFT</i>	Trigger	Trigger	B	Trigger	Trigger	Trigger	Trigger	Trigger	Trigger	B
Action	<i>BTN_RIGHT</i>	Front left	Right side	A	Bomb, Reload	Offscreen/A/C	C	A1	Right side	Pump/Front left	A
Start	<i>BTN_MIDDLE</i>	Middle left	Left side		Start	B	A	B2	Front left	Rear left	PLUS
Select	<i>BTN_1</i>	Rear left #1			Select	START	B	B1	Rear left	Rear right	MINUS
SUB1	<i>BTN_2</i>	Rear left #2			A	SELECT	SELECT	A2	Stick button	Front right	1
SUB2	<i>BTN_3</i>	Rear left #3			B		START	C1			2
SUB3	<i>BTN_4</i>	Rear left #3						C2			HOME
Up	<i>BTN_5</i>	Top back			↑	↑	↑	↑	↑	↑	↑
Down	<i>BTN_6</i>	Bottom back			↓	↓	↓	↓	↓	↓	↓
Left	<i>BTN_7</i>				←	←	←	←	←	←	←
Right	<i>BTN_8</i>				→	→	→	→	→	→	→

## Pedals support



Starting v40, pedals are supported out of the box. By default, they are automatically mapped on the following key according to each player:

- C key for Player 1
- V key for Player 2
- B key for Player 3
- N key for Player 4

This can be customized to your taste in D - Controllers section of /userdata/system/batocera.conf by adding one line per player:

controllers.pedals1=c

1 is the player number; c is the chosen key. If you want player 2 foot pedal to be right ctrl, then:

controllers.pedals2=rctrl

Support across emulators is a work in progress.



If you can't rebind your foot pedal in any existing tool (hardcoded), jump in #lightguns channel in our discord, or [create a new issue](#) on our Github with `FOOT PEDAL` in the title. We will make it work out of the box natively. As of v40, only VEC Infinity 3 USB Digital Foot Control was added to the list.

Emulator	Pedal support
Dolphin	✗
Duckstation	✓
Flycast	✗
Hypseus Singe	✗
Libretro cores	✓
MAME (standalone)	✓
model2emu	✗
PCSX2	✓
Play!	✗
Supermodel	✗
RPCS3	✗

## Per-game testing spreadsheet

A list of tested light gun games (and any notes that pertain to them specifically) can be found [on its own spreadsheet](#).

Beta testing, bug-finding and workarounds are welcomed on the Discord channel #Lightguns or on the [mega-issue report](#).

## Per-emulator notes

Although most light gun games will be plug and play, certain titles/emulators require extra actions (typically calibration in the emulated game itself). These are limitations of the software, but will be automated in the future for games that require it.

## 3DO (Ir-opera)

In-game recalibration is required, located in the game menu options. This is different per-game. This only needs to be done once.

## Arcade (general)

### MAME

A few games have an offscreen reload system which does not work well with the Wiimote. The system can be forced to perform a manual reload action with a press of the primary button (in the Wiimote's case, [A]):



1. While in the MAME gamelist, press [SELECT]. Then go to **ADVANCED SYSTEM SETTINGS**.
2. Go to **OFF-SCREEN RELOAD** and set it to "ON".

Hopefully, this issue will be fixed in future versions such that offscreen reloading works out of the box with the Wiimote.

The current accuracy is not perfectly 1:1, caused by a fake and forced 4:3 ratio. This will be fixed in the future.

## Commodore 64

Commodore 64 games were released in various mediums. It was very common for all tape ROMs (TAP files) light gun games to also feature a joystick version on the other side of the tape. In order to use light guns, the light gun version of the game is needed. Disk images usually support both.

## Model 2 (model2emu)

Model2emu crosshair does not follow where the light gun is actually pointing. Keep it disabled to best accuracy.

## Model 3 (Supermodel)

Supermodel white border for Sinden Lightguns is enabled on rpi4 and rpi5 starting v41.

## PSX (all)

Starting v39, all gun games are compatible with both Justifier and GunCon light gun controller type in

PCSX-reARMed core. If a GunCon conversion patch was applied to the ROM, you will need to force GunCon controller type in EmulationStation. Starting v40, DuckStation is compatible with Justifier and GunCon light gun controller type.



Area 51 has no known working patch.

## Saturn (only libretro: beetle-saturn)

In-game recalibration is required, located in the game menu options. This is different per-game. This only needs to be done once.

## SNES

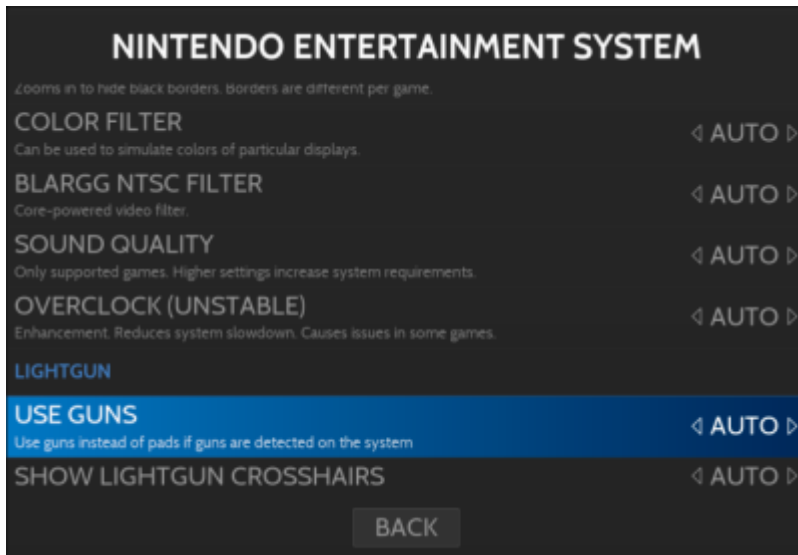
The Justifier controller type does not work in libretro: mesen-s and libretro: bsnes, rendering Lethal Enforcers unplayable with these cores.

## A note about the controller type option

Veteran users may recall the controller type option in the advanced system settings for each system needing to be set to a particular light gun (specific to that system) in order to play light gun games. As of **v35**, this is no longer necessary, as Batocera will automatically use the appropriate controller type if a light gun is connected. **The crosshair option will also be automatically disabled for the light guns** - except if you play with the Mayflash Dolphinbar, which will be automatically enabled.

Two new options have been added to the global game options:

- **USE GUNS:** The magic that enables all of this to be configured automatically.
- **SHOW LIGHTGUN CROSSHAIRS:** Opt to manually show the crosshairs (perhaps to assist with aiming in general), manually remove the crosshairs or let Batocera decide for you.



## Troubleshooting

### Wiimote issues

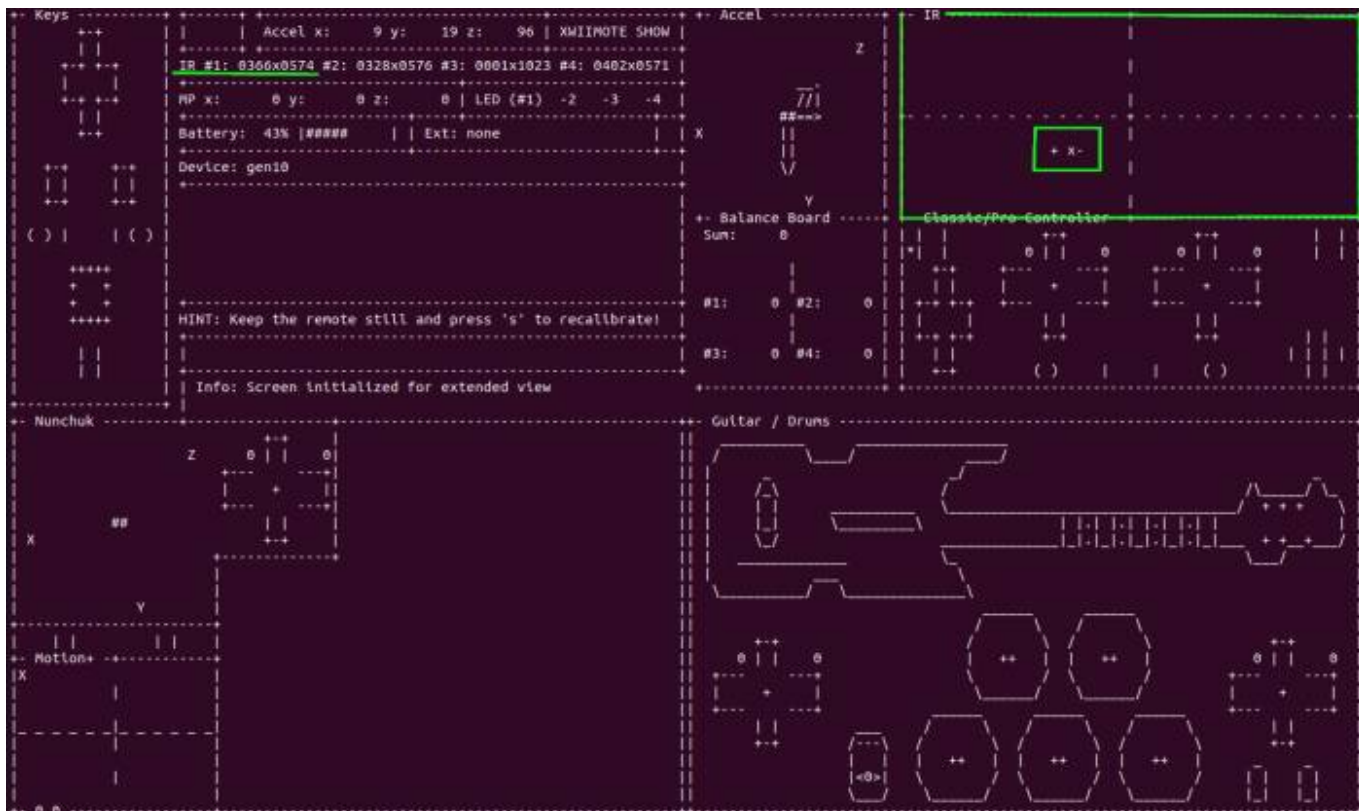
#### I can't aim at the upper-left target! I've moved as far back as I can

The Wiimote works by sending a video feed of its IR camera to the machine. This sensor is very poor, and can fail to see the IR LED if too far away. So, there's a “sweet spot” for each display where you are both far enough away to see the IR bar when aiming at the extreme corner opposite the IR bar, while still being close enough for the IR camera of the Wiimote to pick it up.

To debug this to get an accurate reading, [connect via SSH](#) and run the following:

```
xwiishow 1
```

This will show a video feed of the IR camera in the upper-right of the SSH session:



To visualize what this information represents, imagine this being a flipped version of the position being aimed at on the display:



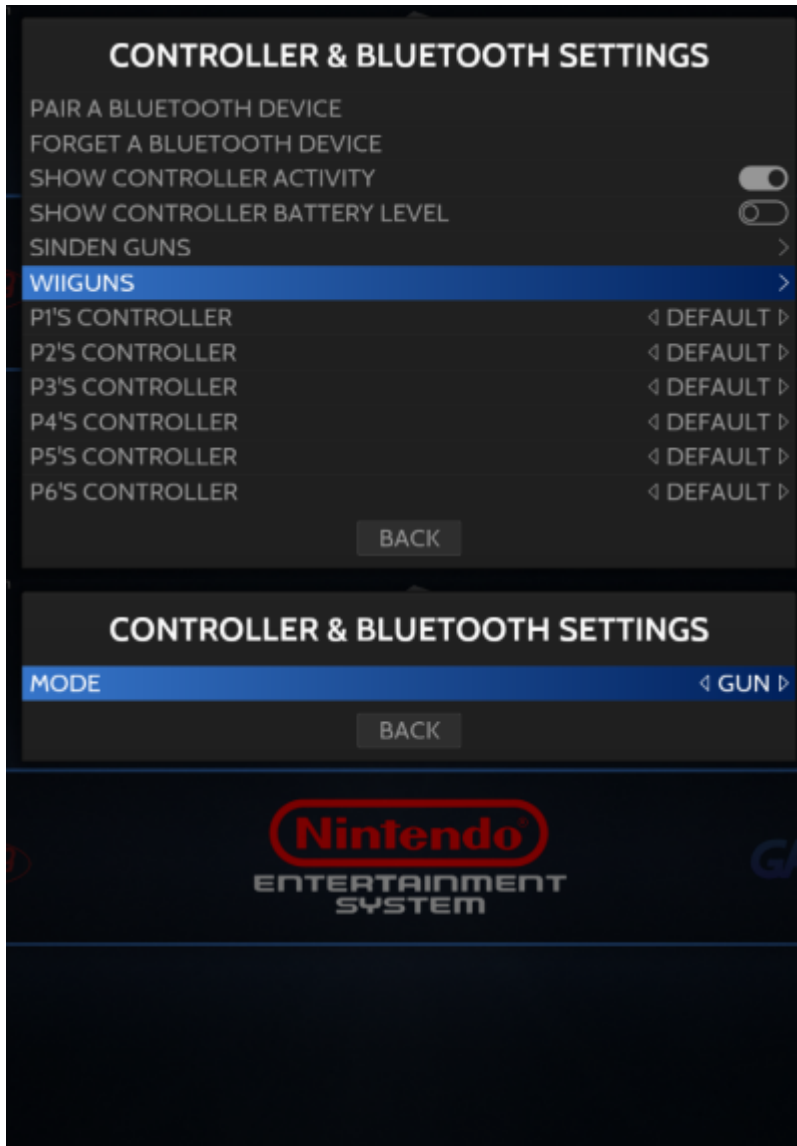
**But I'm not using a Wiimote!**

Make sure there are no reflective surfaces or other obstructions that can interfere with the visual. If placing the LED on a flat surface like the top of the entertainment unit, ensure it is as close to the edge as possible to make sure it's not obscured by its edge when aiming from a lower position (you may want to prop up the IR bar on some rubber stoppers).

**My Wiimote is appearing as a regular controller instead of a light gun**

First, ensure you are running Batocera **v35** or higher.

Otherwise, ensure that **CONTROLLER & BLUETOOTH SETTINGS** → **WIIMOTE GUN SETTINGS** → **MODE** and set it to “GUN”.



## My recoil isn't working

Replug the light gun or change recoil settings.

## My second Sinden crosshair is stuck upper-left corner



Batocera is not compatible with beta firmware. If your gun is on v1.9 or later, please downgrade to v1.8.

Avoid using a USB hub when connecting both guns. Use different USB speed port for each (ex.: USB 2.0/USB 3.0) or different pair (ex.: one in front of the PC, one in the back). If using a Raspberry Pi, make sure you have enough power voltage.

A reboot might be necessary if hot plugged in.



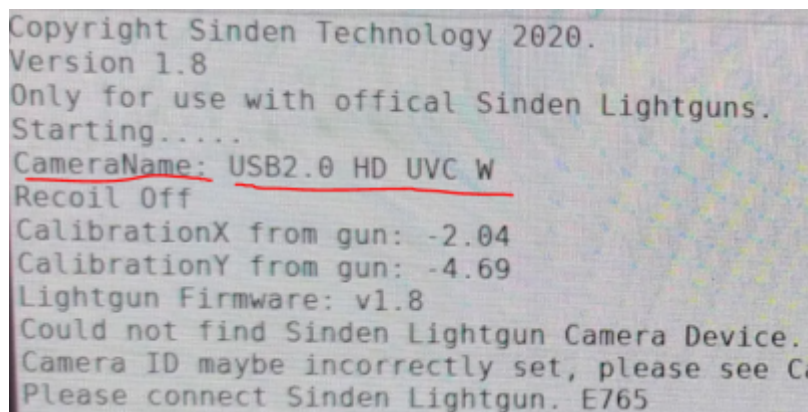
**RPI4:** Plug your first sinden in USB3 port. Wait 10s. Plug your second sinden in USB2 port. Wait 10s.

You need a good amount of power voltage too.

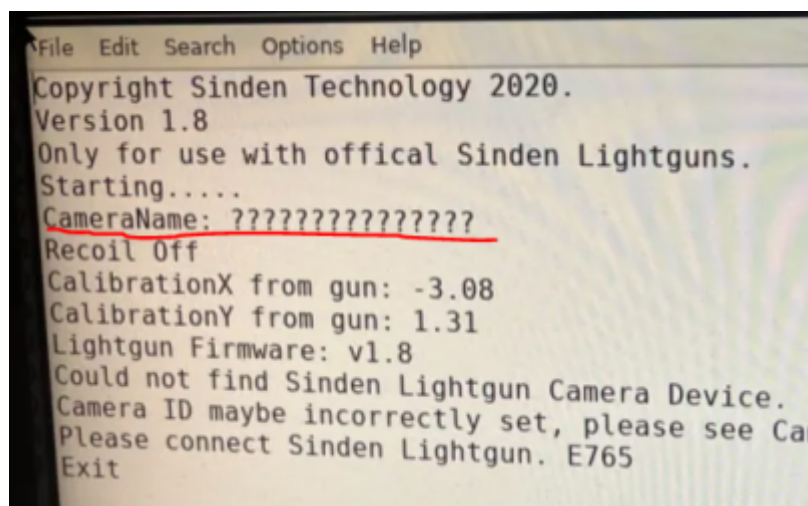
**Steam Deck dock:** Most issues are fixed with a good quality SDCard and the official Steam Deck dock with good amount of power voltage.

**Later Sinden Lightgun models (currently fixed in Batocera v40)** There actually is a known issue with later models cameras. If you bought in mid-2023 and later, you might encounter this issue even if it works fine on Windows.

Open the file manager (F1) or connect with SSH and navigate to /var/log/ folder. There, you should see virtual-sindenlightgun\* file logs. Open it and if you see this :



Or this :



You might need to update your camera name by following the [the guide here \(.PDF\)](#).

### My Sinden Lightgun shows "Unknown SindenLightgun connected" notification

If you are on Batocera v40+, make sure Disable Joystick mode is clicked when flashing firmware on Windows (v1.09 and above).

If you tried to flash your light gun from linux itself or Steam OS, you must downgrade to 1.08 or 1.03 and upgrade again.

## My aiming accuracy in certain games is much worse than others

Some games offer a recalibration menu in-game. Use that to work around such issues. This will be different per-game of course.

Arcade games typically require the use of the service menu, refer to the [exceptions](#) section above.

## I'm having another issue

Check out the [mega-issue report](#), it's probably already been reported.

If having issues with ROM loading itself, check out the [generic troubleshooting page](#).

1)

2P only with Gangster Town

2)

2P only with Lethal Enforcers

From:  
<https://wiki.batocera.org/> - **Batocera.linux - Wiki**

Permanent link:  
[https://wiki.batocera.org/emulators:lightgun\\_games?rev=1757880003](https://wiki.batocera.org/emulators:lightgun_games?rev=1757880003)

Last update: **2025/09/14 20:00**

