

# Manual upgrades/downgrades

This is for if you:

- can't upgrade/downgrade from stable to beta or vice versa using **MAIN MENU > UPDATES & DOWNLOADS > UPDATE TYPE > "Stable"** or **"Beta"** and updating or using [SSH](#) for the same thing,
- want to downgrade to [an older revision](#), or
- want to install a custom version of Batocera.

## The Batocera drive layout

First a little explanation of how Batocera is laid out on your drive, as this will help in understanding exactly what files need to be placed where later on:



- The **boot** partition is what appears as the FAT32 partition when you plug the drive into another system. The boot partition contains the files required to boot, this is mounted in read-only mode to `/boot/` during boot. The read-only batocera SquashFS file is also contained in the boot partition. On boot, this filesystem is mounted at `/` to run Batocera proper. You'll also find `batocera-boot.conf` here. In Batocera **v31** and lower, the custom splash videos you have uploaded would be copied here too. This partition is assigned 6 GB of space (4 GB with older images of Batocera), with 2 GB used by Batocera. Files in only this partition are overwritten when updating Batocera; it's relatively simple to upgrade/downgrade Batocera versions because of this design.
- The userdata contains "the rest", all the BIOS files, ROMs, save data, user configuration (including `batocera.conf`). This partition is not touched when upgrading/downgrading. This is designed to be portable between all versions of Batocera, even Batocera builds running on different platforms (granted, weaker platforms like [SBCs](#) won't magically gain the ability to play ROMs for emulators they don't have).

## Upgrading/downgrading Batocera

In Batocera **5.23** and higher, it is advised to upgrade/downgrade using the `batocera-upgrade` command [via SSH](#). Grab the [URL of the version you want](#) to upgrade/downgrade to and run

batocera-upgrade [URL]. For example, to upgrade to the latest stable for x86\_64:

```
batocera-upgrade https://batocera.org/upgrades/x86_64/stable/last
```

Or to downgrade to a specific [older version](#), like in the example below to downgrade to Batocera 36 for PC x86\_64. Don't copy that command on another architecture like a Raspberry Pi, you need to adapt the URL to it.

```
batocera-upgrade  
https://mirrors.o2switch.fr/batocera/x86_64/stable/last/archives/36/
```

In Batocera **39** and higher, you can manually download the boot.tar.xz file to /userdata/system/upgrades. Then type

```
batocera-upgrade manual
```



The command `cat /boot/boot/batocera.board` can be used to display the arch that should be used. For example, on a PC this will display x86\_64.

You should then see output similar to this:

```
Starting the upgrade...  
url: https://updates.batocera.org/x86_64/stable/last/boot.tar.xz  
need to download 1876mb  
/userdata/system/upgrade/boot.tar.xz      0%[ ]  
9.55M  1.82MB/s      eta 19m 42s
```

For very old versions, from Batocera 5.7 to 5.22, the command (for PC x86\_64, please adapt to the right architecture) would instead be:


```
/recalbox/scripts/recalbox-upgrade.sh  
https://batocera.org/upgrades/x86_64/stable/last
```

These commands download the compressed upgrade (or potentially downgrade) file and expand it to overwrite the Batocera system on the boot partition. Upgrading or downgrading like this *doesn't* remove any of your user data (ROMs, saves, metadata...). Like never, ever.

On the next reboot of Batocera, it will instead use the upgraded version. If the automatic upgrade tool is not suitable for your purpose, then you can manually upgrade/downgrade as specified below instead.

## Upgrade from a local boot.tar.xz file



In Batocera **v38** ( **Fix Me!** confirm versions) and higher, the following procedure will wipe your userdata if the `autoresize=true` flag is uncommented in



batocera-boot.config. You have been warned...

To upgrade/downgrade manually from a downloaded `boot.tar.xz` file:

1. Download the `boot.tar.xz` file of the version you want. The official ones are available at <https://mirrors.o2switch.fr/batocera/> (for older versions, navigate to your architecture and go to `/stable/last/archives/`). [Here's a list of architectures and links to their builds.](#)
2. Backup your boot configuration files (`batocera-boot.conf` and `config.txt`) from the Batocera machine (if you have edited them and require the edits to boot properly) to a safe location.
3. Unzip the `boot.tar.xz` file (it's just like a `.zip`, you can use 7-zip on Windows) to get the `boot.tar` file.
4. Unzip the `boot.tar` file into the root of your Batocera drive's [boot partition](#) (this is the default partition you see when inserting the drive into Windows) and overwrite the existing files. You may have to [assign a drive letter under Windows Disk Management](#) to see it in the file explorer.
5. Before booting Batocera, restore your boot configuration files to avoid your userdata partition from being wiped.

## What the batocera-upgrade command does

Ordinarily, the built-in updating tool will do all of the following automatically:

1. Download the boot image file to `/userdata/system/upgrade/boot.tar.xz` in the userdata partition
2. Check the md5sum of the file to ensure that it was downloaded correctly (this may take a bit of time, depending on the speed of your drive)
3. After validation, remount the boot partition in rewritable mode
4. Back up your boot config files: `/boot/batocera-boot.conf` to `/boot/batocera-boot.conf.upgrade` and `/boot/config.txt` to `/boot/config.txt.upgrade`
5. Unzip the contents of `/userdata/system/upgrade/boot.tar.xz` to `/boot/`
6. Restore your boot config files: `/boot/batocera-boot.conf.upgrade` to `/boot/batocera-boot.conf` and `/boot/config.txt.upgrade` to `/boot/config.txt`
7. Do a "final cleanup"
8. Remove `/userdata/system/upgrade/boot.tar.xz`

## Not enough space to update

### Userdata partition

If you get an error message telling you that you don't have enough space on your userdata partition to download the file, there might be several reasons:

- Your drive is less than 8 GB total. Batocera can *run* on these drives but you will be missing out on using the built-in updater.
- Your userdata partition does not have at least 2 GB additional free space to download the `boot.tar.xz` file.

To work around there not being enough free space in the **userdata** partition, you can do any of the following:

- Temporarily remove some of your ROMs, BIOS, and other userdata to make enough free space to download the `boot.tar.xz` file.
- Download the `boot.tar.xz` from [the server](#) for the intended Batocera version onto another computer, connect the Batocera drive to it, and extract the contents of `boot.tar` directly to the boot partition of Batocera.

## Boot partition

If you get an error message telling you that you don't have enough space on your Batocera boot partition while attempting to upgrade, there might be several reasons:

- Your drive is less than 8 GB total. Batocera can *run* on these drives but you will be missing out on using the built-in updater.
- On Batocera **v31** and lower, the [splash video file\(s\)](#) (which are copied to the `/boot` partition) are/is taking up too much space. Remove them/it, reboot and try to upgrade again.
- Your first installation was an older version of Batocera, where the `/boot` partition was initially assigned less space (compared to installations of newer Batocera versions).
- Your installation is corrupted.

To work around there not being enough free space in the **boot** partition, you can do any **one** of the following:

## Flash a spare drive

[Flash](#) a spare USB/portable hard-drive with a new copy of Batocera and boot into that, copy all your `/userdata/` (everything in Share) from your old Batocera drive to your spare USB/portable hard-drive and then reflash the old Batocera drive with a new version of Batocera (or just continue to use your spare USB/portable hard-drive).

## Reflash the drive

Backup your `/userdata/` to another device (you may lose file attributes by doing this, causing problems with WINE/Cemu) and [reflash Batocera](#).

## Manually extend the boot partition

Extend the boot partition of your drive using an advanced tool like [gparted](#) or [GNOME Disks \(a.k.a. gnome-disk-utility\)](#). **This will likely destroy your userdata partition**, so back up all your ROMs, saves, configs, etc. first. This may cause irreversible damage to your drive and it may damage the MBR/GPT table, causing the drive to become unbootable. Consider the other options or just staying on your current version of Batocera. Batocera **v30** requires at least 6 GB total assigned to the boot partition and 2 GB free space in the userdata partition to be able to use the built-in updater.

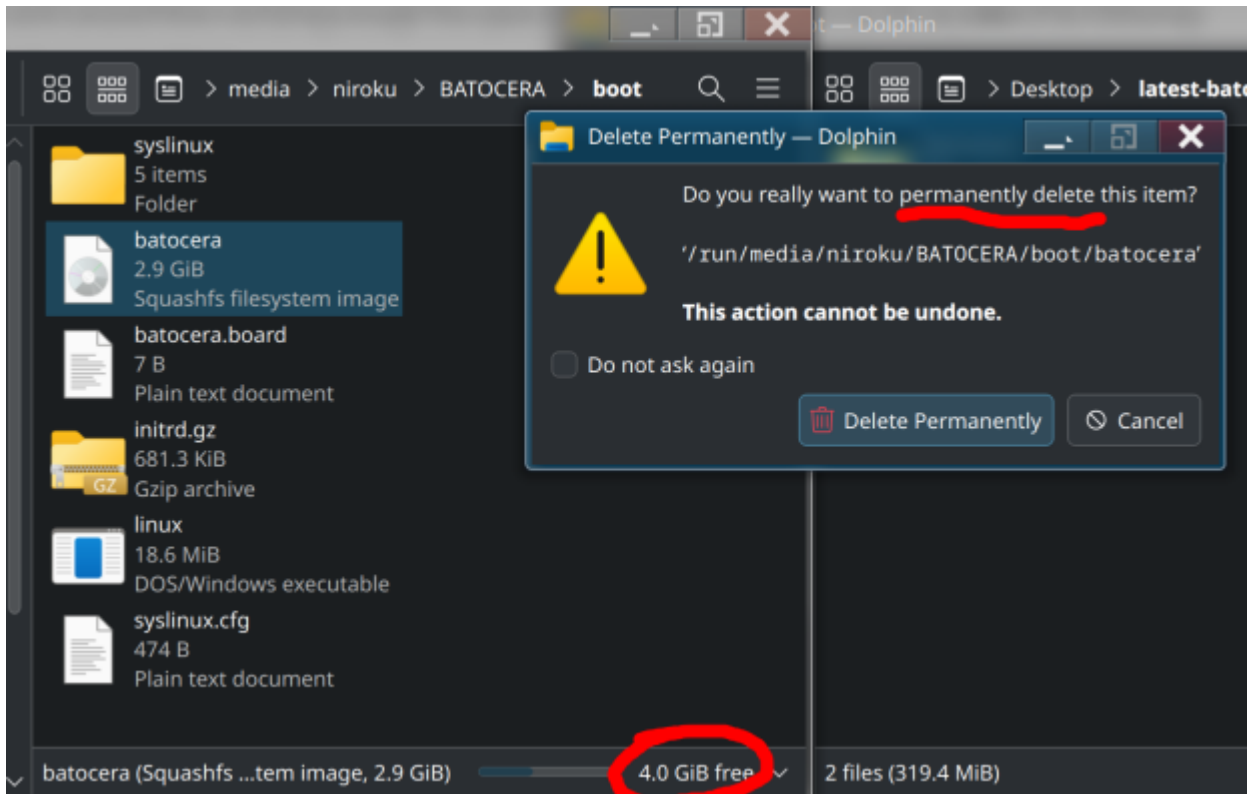
## Use another computer

Use another computer to extract the update files onto the Batocera drive. Be aware that by doing this you would have to do this manual workaround every time you need to update.

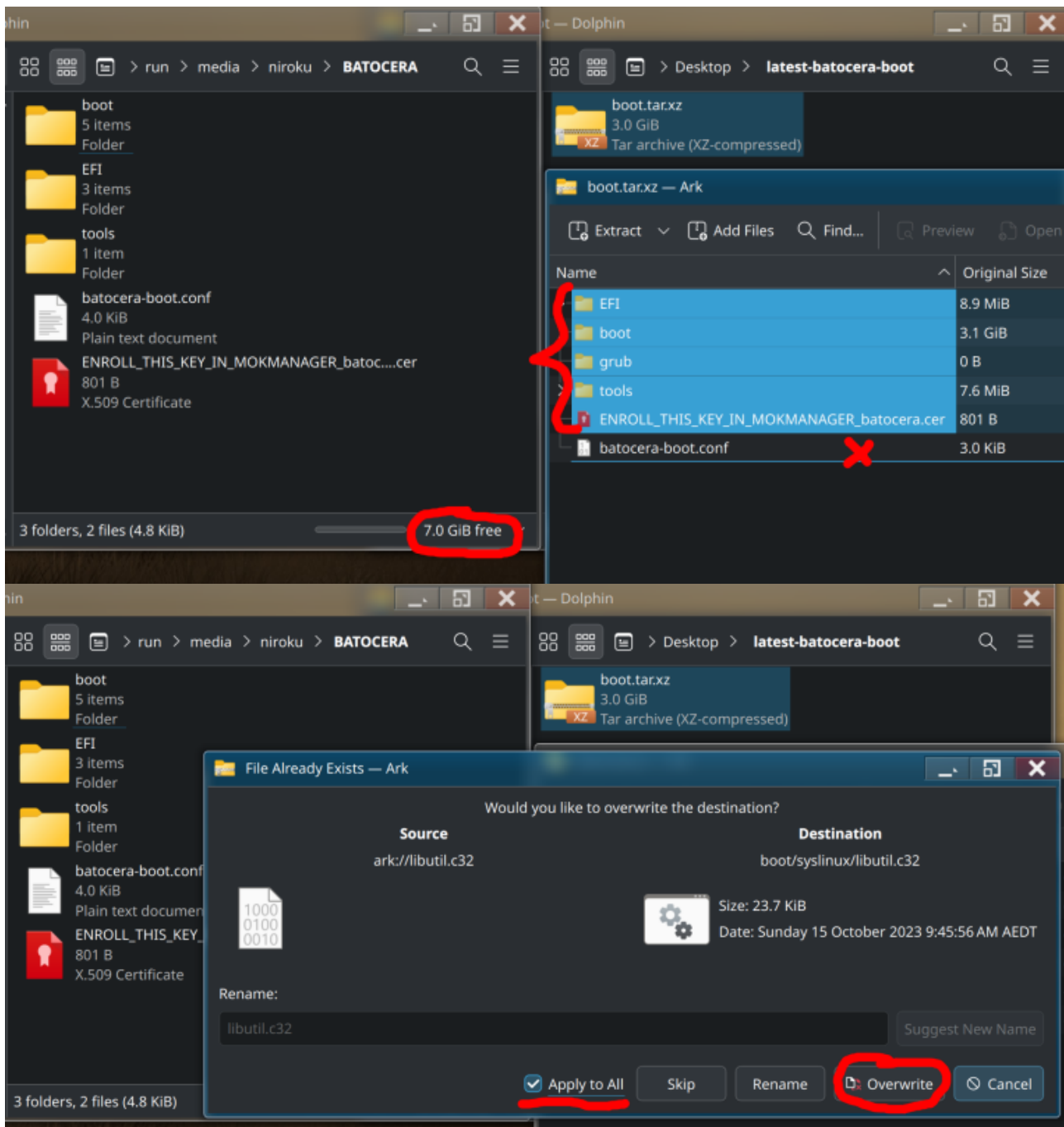
1. Insert your drive into another computer.
2. Back up the contents of the FAT32 boot partition of the Batocera drive (Windows should only be able to see this partition and nothing else by default) to another location.
3. Permanently delete the /boot/batocera file from the Batocera drive (it is just called batocera without a file-extension and is about 2 GB large (smaller in older versions)).



Ensure that you are actually deleting the file and not just sending it to the recycle bin of your OS. This can be done in most operating systems by holding [Shift] and then tapping [Del] with the file selected. Check that the remaining free space on the drive lowers to confirm this.

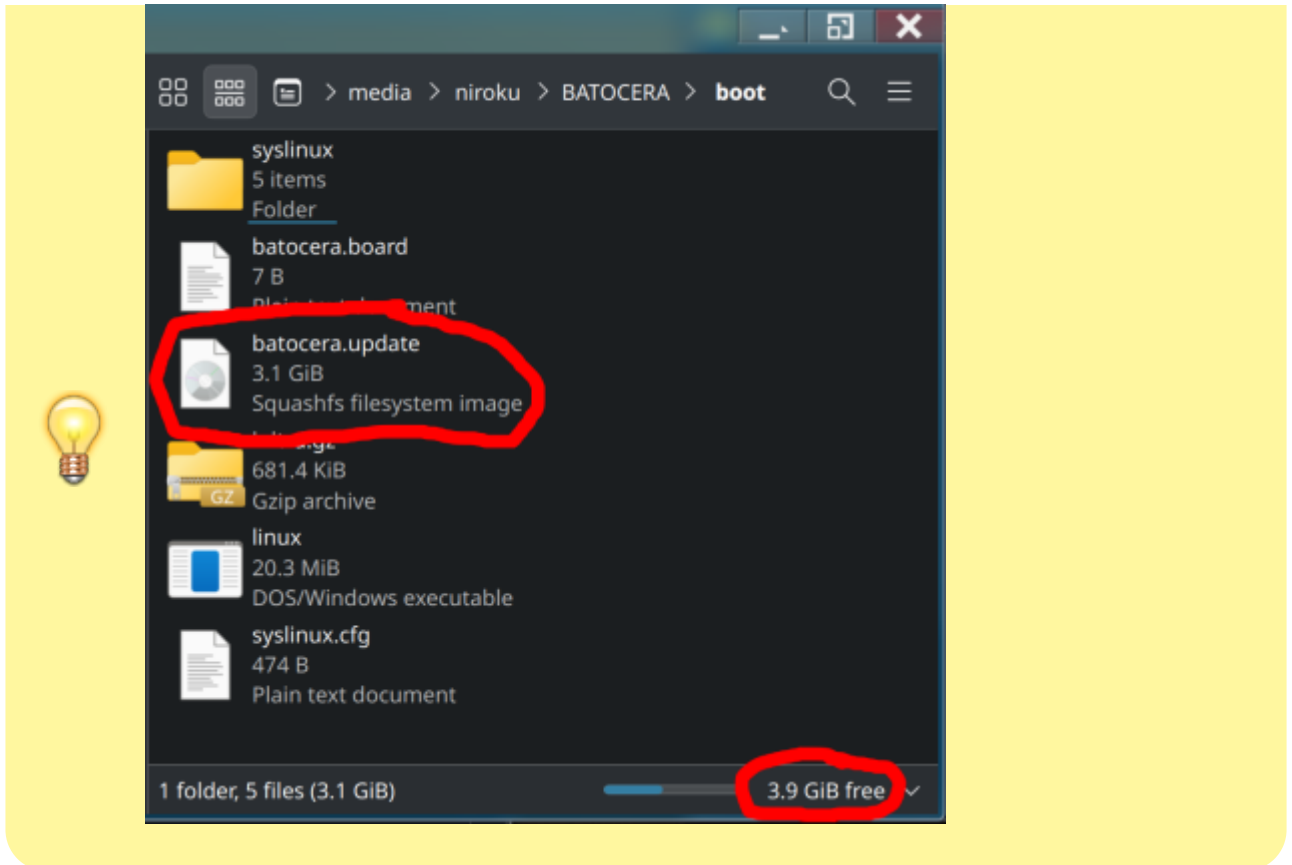


4. Extract the boot .tar file to the root of that partition, excluding the batocera-boot.conf file.



You can confirm the transfer completed successfully by the presence of the batocera.update file in the boot folder of the drive.





1. Replug the Batocera back into your Batocera machine and boot Batocera.



If Batocera fails to boot, you can restore the data you backed up in step 2.

## Remove the old version first

Remove the old version of Batocera *before* overwriting it with the update. Be aware that by doing this you would have to do this manual workaround every time you need to update.

1. Boot into Batocera, [SSH into it](#) or use the file manager's xterm and run the following:

```
mount -o remount,rw /boot
```

2. Backup your /boot/boot/batocera file to another device or the userdata partition if you have enough space there (cp /boot/boot/batocera /userdata/system/batocera-backup, or you can exit the xterm with [Alt]+[F4] and then use the file manager to copy the file to your /userdata/system/ folder)
3. Run the following command to delete the batocera file and immediately upgrade:

```
rm -i /boot/boot/batocera && batocera-upgrade
```

Confirm the file you want to delete.

You should then get an output that looks like this:



```
Starting the upgrade...
url:
https://updates.batocera.org/x86_64/beta/last/boot.tar.xz
need to download 1876mb
m/upgrade/boot.tar.xz      0%[
9.55M  1.82MB/s      eta 19m 42s
```

4. Wait for the upgrade to completely finish, then reboot to apply the changes.



If Batocera fails to boot, you can restore the backup you made in step 2 and then remove it with (replacing the first path if you used a different location for your backup):

```
cp /userdata/system/batocera-backup /boot/boot/batocera && rm
/userdata/system/batocera-backup
```

From: <https://wiki.batocera.org/> - **Batocera.linux - Wiki**

Permanent link: [https://wiki.batocera.org/upgrade\\_manually?rev=1721996049](https://wiki.batocera.org/upgrade_manually?rev=1721996049)

Last update: **2024/07/26 12:14**

