

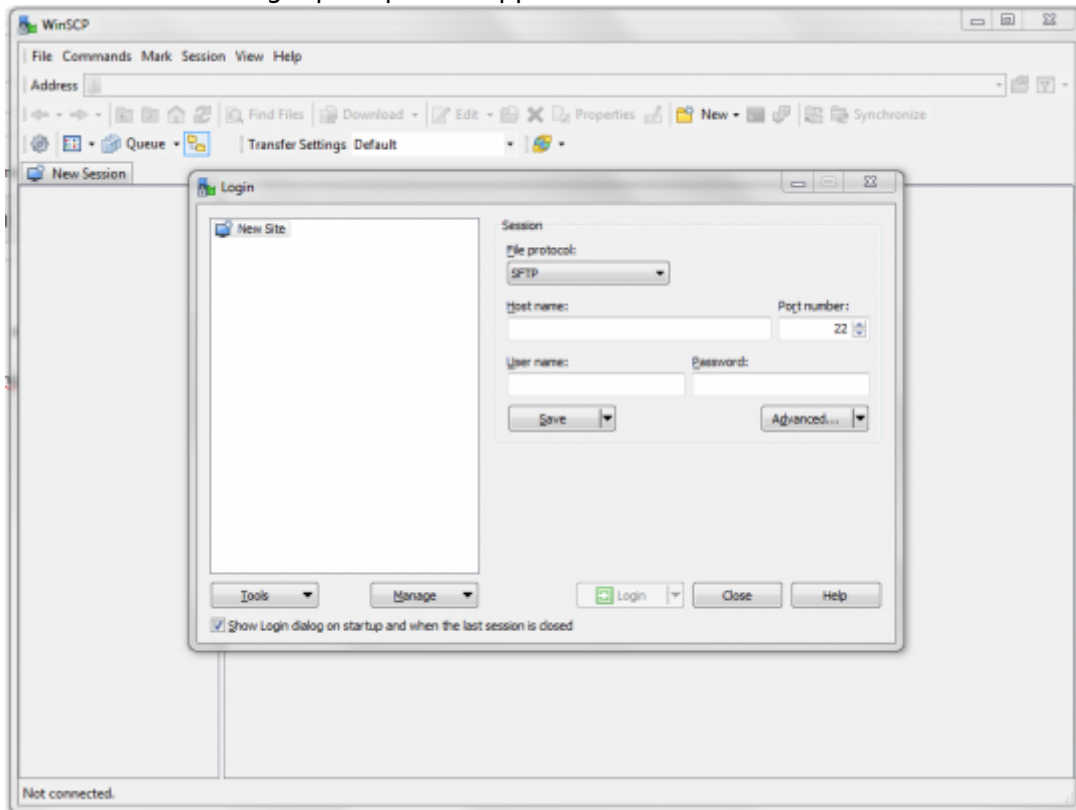
WinSCP


This is a quick guide on how to use WinSCP to transfer files over the network to your Batocera machine from your Windows computer.

1. Download and install [WinSCP](#). It is recommended to use the “Explorer Interface” by default.

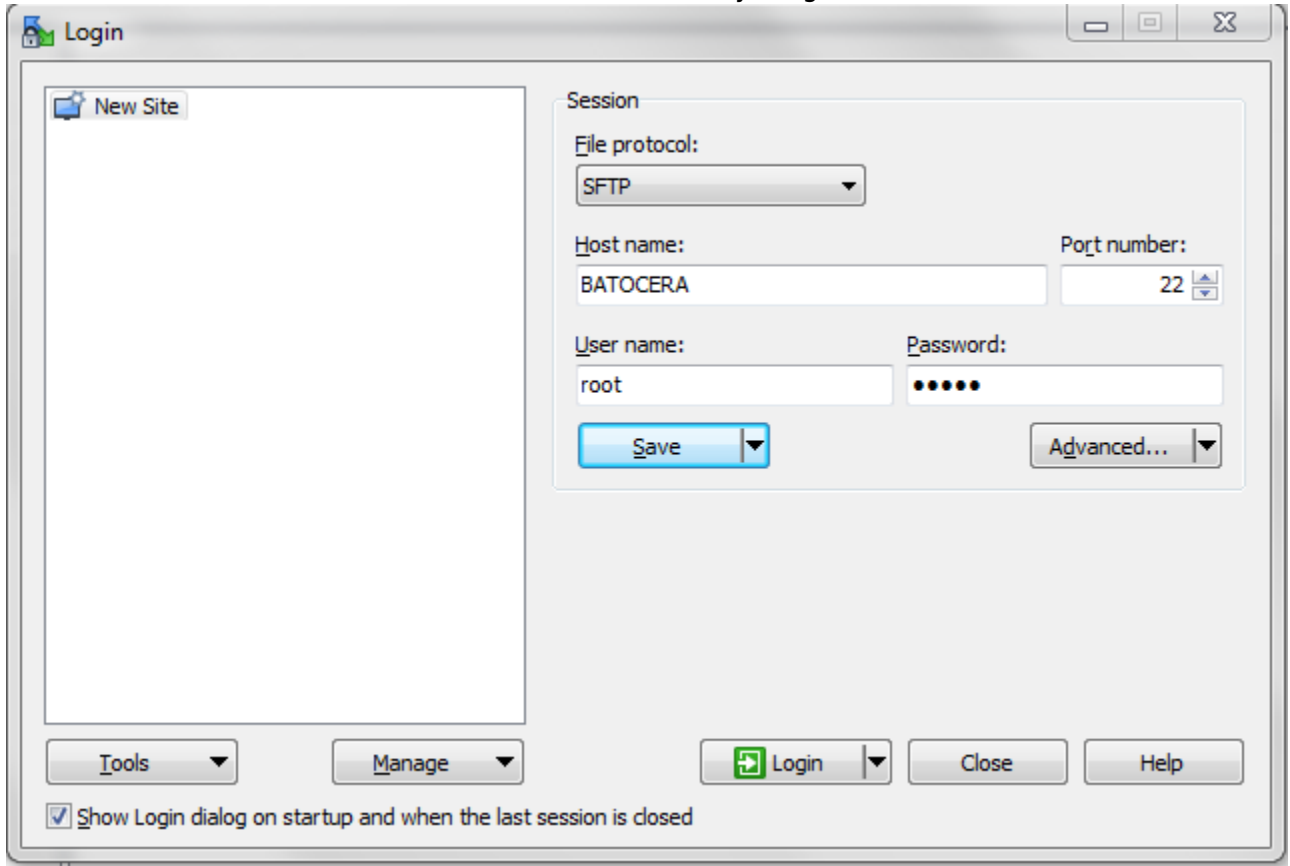


2. Click on **New Site** in the login prompt that appears.

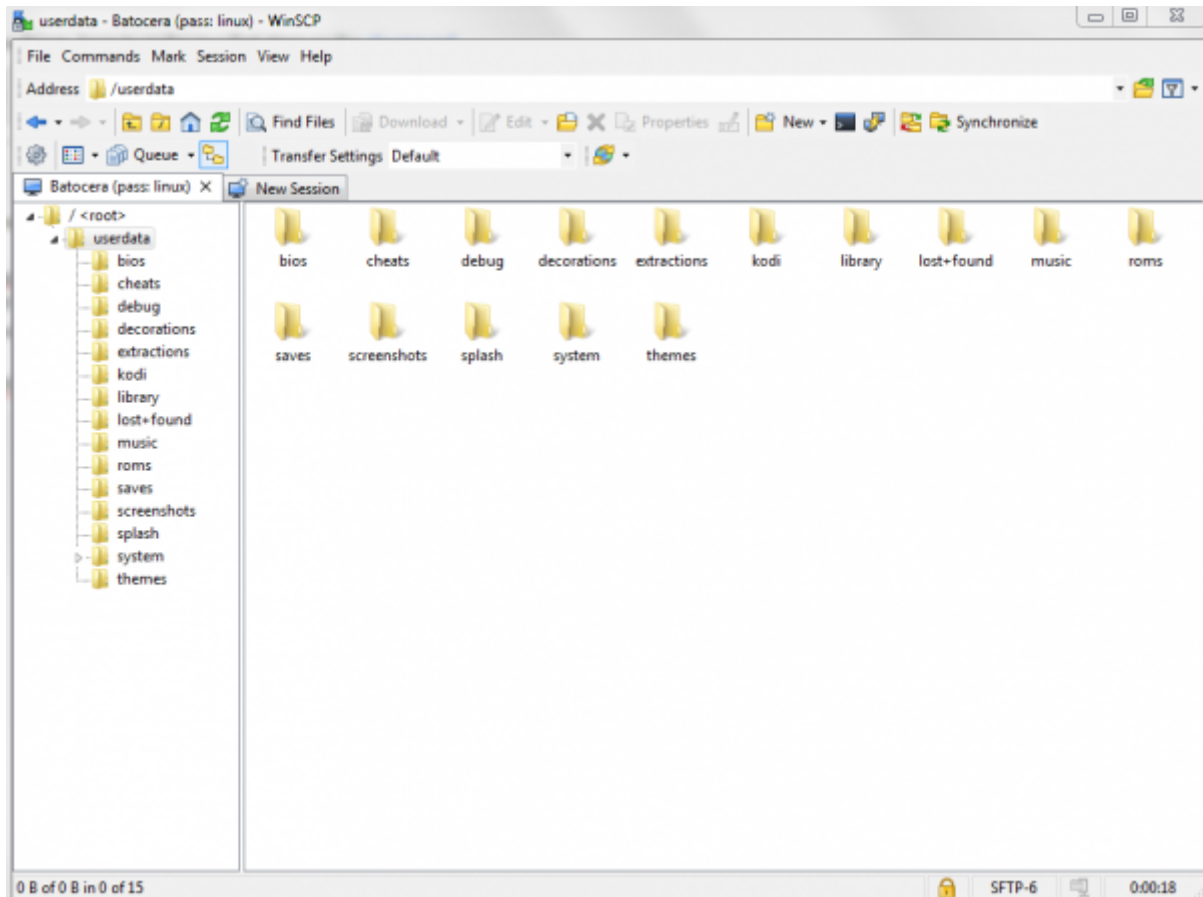


 If you have already set up PuTTY, then you'll be asked to import your logins from there. Go ahead and do that instead to save some time.

3. Enter the appropriate details to login to your machine. By default, **Host name:** BATOCERA, **User name:** root and **Password:** linux. Leave everything else at its default.



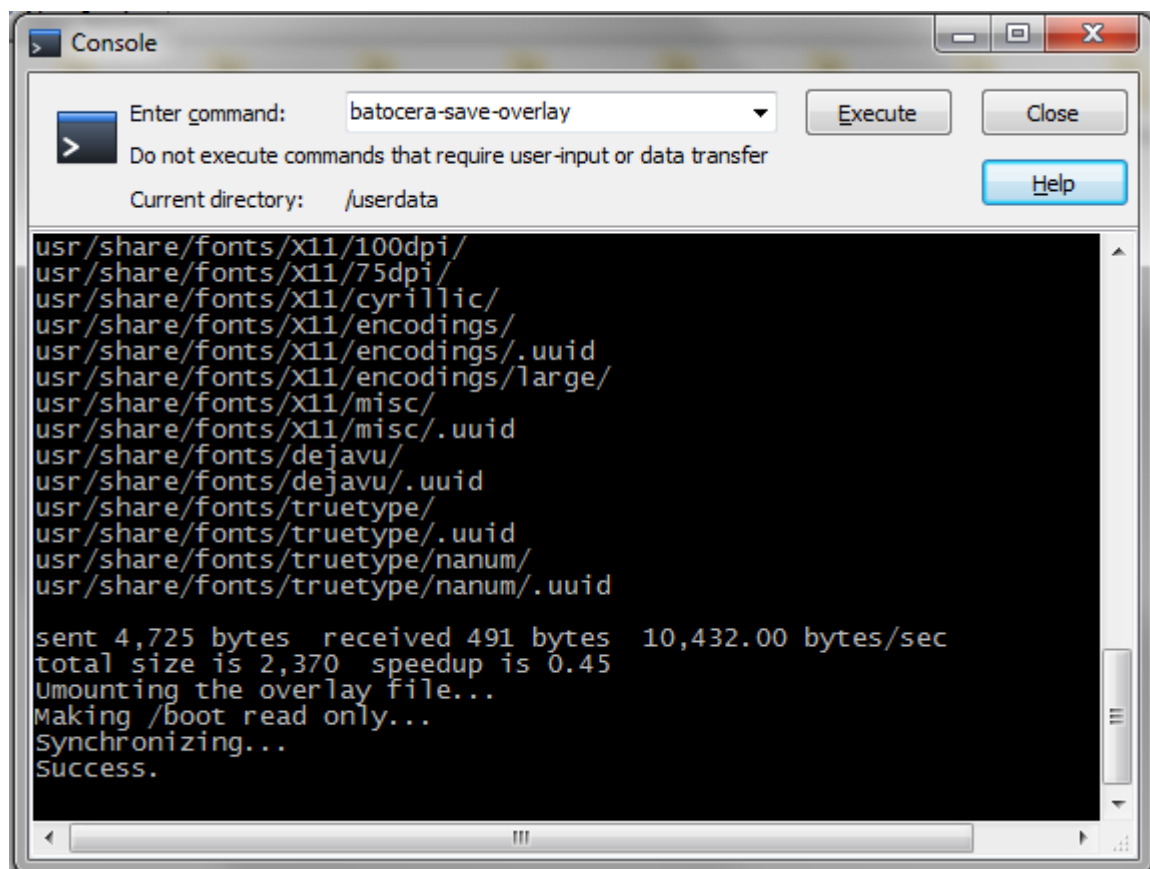
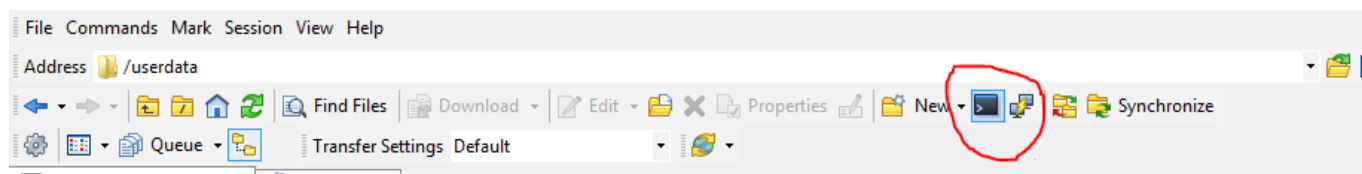
4. Click **Save**, **OK** and login.



The neat thing about this is unlike the normal network share, this lets you access the root directory as well, giving you access to the system files too. Be careful when editing these, as they can cause problems with Batocera's functionality. If you'd like to make changes you make to the files outside of the /userdata/ directory permanent, run batocera-save-overlay in the terminal. What's the terminal? Read below:

Forget PuTTY, WinSCP is my best friend now

WinSCP can also do command line stuff. Just click this little dude in the toolbar at the top:



Just be aware, this is a very simple affair, only really useful for entering single-line command sequences. If you want a proper SSH client, use PuTTY instead.



For further SSH commands, check out [the SSH page!](#)

Troubleshooting

Check out [the relevant section on the troubleshooting page](#).

From:
<https://wiki.batocera.org/> - **Batocera.linux** - Wiki

Permanent link:
<https://wiki.batocera.org/winscp>

Last update: **2021/11/02 02:08**

